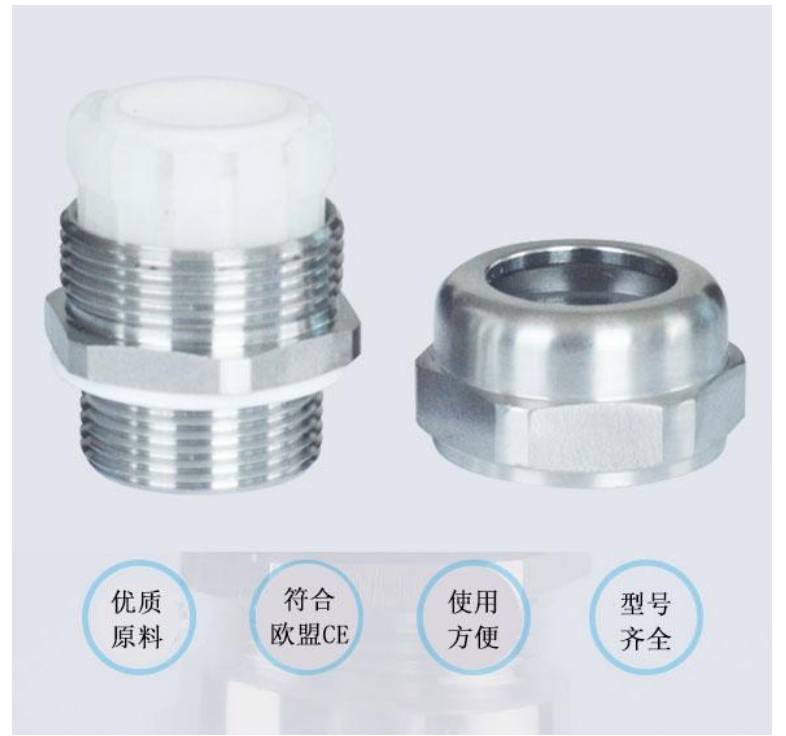


耐高温金属电缆防水接头

- 产品材料:** 黄铜镀镍, 密封件硅胶
- 防护等级:** IP68
- 工作温度:** 常规-20° ~ 180°, 短时可达 200°
- 产品特性:** 适用于高温环境, 可有效保障密封性能。
- 订购说明:**
 - 1) 默认五件套: 垫片,主体,密封圈,夹紧爪, 螺帽;
 - 2) 特殊说明, 发货不附螺母, 如需另外购买;
 - 3) 产品价格为 (人民币: 元/套, 美元: USD/set)



High temperature resistant metal cable gland

- Product material:** nickel plated brass, silicone seal
- Protection grade:** IP68
- Working temperature:** normal - 20 °~180 °, up to 200 ° in a short time
- Product characteristics:** suitable for high temperature environment, can effectively guarantee the sealing performance.
- Ordering Instructions:**
 - 1) Default five piece set: gasket, main body, sealing ring, clamping claw, nut;
 - 2) Special instructions, nuts are not attached to the shipment, if necessary, purchase separately;
 - 3) The product price is (RMB: yuan/set, USD: USD/set)

•产品应用/Product application



产品尺寸表/Product size

| 蓝江产品型号 | 螺纹规格 | 电缆范围 | 螺纹长度 | 扳手尺寸 |
|---------------|----------|-------------|---------------|-------------|
| Product model | M Thread | Cable range | Thread length | Wrench Size |
| PN. | M | φ mm | GL mm | cap mm |
| MG12A-08-HT | M12×1.5 | 4~8 | 8 | 17/17 |
| MG16A-08-HT | M16×1.5 | 4~8 | 8 | 18/18 |
| MG16A-10-HT | M16×1.5 | 6~10 | 9 | 22/22 |
| MG18A-10-HT | M18×1.5 | 6~10 | 9 | 22/22 |
| MG18A-14-HT | M18×1.5 | 8~14 | 9.5 | 26/26 |
| MG20A-12-HT | M20×1.5 | 7~12 | 10 | 24/24 |
| MG20A-14-HT | M20×1.5 | 8~14 | 10 | 26/26 |
| MG25A-18-HT | M25×1.5 | 13~18 | 12 | 32/32 |
| MG32A-25-HT | M32×1.5 | 18~25 | 12.5 | 40/40 |
| MG40A-30-HT | M40×1.5 | 24~30 | 15 | 50/50 |
| MG50A-40-HT | M50×1.5 | 33~40 | 15 | 59/59 |
| MG63A-45-HT | M63×1.5 | 38~45 | 15 | 68/68 |
| G1/4A-08-HT | G1/4 | 4~8 | 8 | 17/17 |
| G3/8A-10-HT | G3/8 | 6~10 | 9 | 22/22 |
| G1/2A-12-HT | G1/2 | 7~12 | 9.5 | 24/24 |
| G1/2A-14-HT | G1/2 | 8~14 | 10 | 26/26 |
| G3/4A-18-HT | G3/4 | 13~18 | 12 | 32/32 |
| G1A-25-HT | G1 | 18~25 | 12.5 | 40/40 |
| G1-1/4A-30-HT | G1-1/4 | 24~30 | 15 | 50/50 |
| G1-1/2A-40-HT | G1-1/2 | 33~40 | 15 | 59/59 |
| G2A-45-HT | G2 | 38~45 | 15 | 68/68 |

V0 阻燃金属电缆防水接头

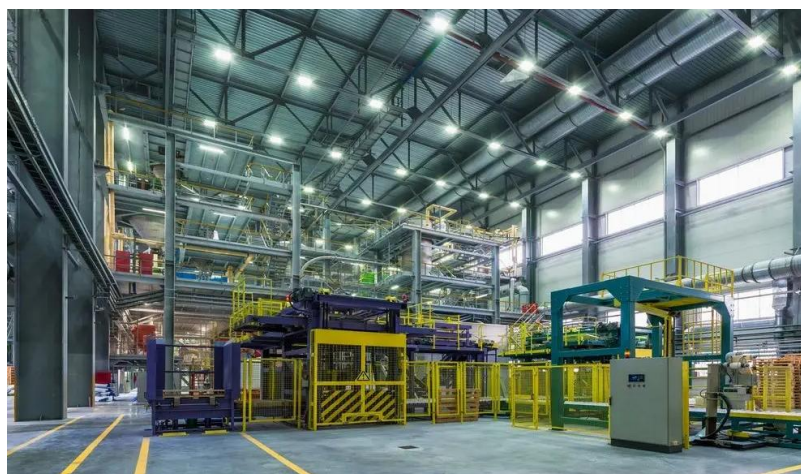
- 产品材料:** 黄铜镀镍, 密封件改性橡胶
- 防护等级:** IP68
- 工作温度:** 常规-40° ~ 105°, 短时可达 120°
- 产品特性:** 适用于易燃环境, 阻燃等级 V0 级。
- 订购说明:**
 - 1) 默认五件套: 垫片,主体,密封圈,夹紧爪, 螺帽;
 - 2) 特殊说明, 发货不附螺母, 如需另外购买;
 - 3) 产品价格为 (人民币: 元/套, 美元: USD/set)



V0 flame-retardant metal cable waterproof joint

- Product material:** nickel plated brass, modified rubber for seals
- Protection grade:** IP68
- Working temperature:** normal - 40 °~105 °, short-term up to 120 °
- Product characteristics:** applicable to flammable environment, flame retardant grade V0.
- Ordering Instructions:**
 - 1) Default five piece set: gasket, main body, sealing ring, clamping claw, nut;
 - 2) Special instructions, nuts are not attached to the shipment, if necessary, purchase separately;
 - 3) The product price is (RMB: yuan/set, USD: USD/set)

•产品应用/Product application



产品尺寸表/Product size

| 蓝江产品型号 | 螺纹规格 | 电缆范围 | 螺纹长度 | 扳手尺寸 |
|-----------------|----------|-------------|---------------|-------------|
| Product model | M Thread | Cable range | Thread length | Wrench Size |
| PN. | M | φ mm | GL mm | cap mm |
| MG12A-08-V0 | M12×1.5 | 4~8 | 8 | 17/17 |
| MG16A-08-V0 | M16×1.5 | 4~8 | 8 | 18/18 |
| MG16A-10-V0 | M16×1.5 | 6~10 | 9 | 22/22 |
| MG20A-12-V0 | M20×1.5 | 7~12 | 10 | 24/24 |
| MG20A-14-V0 | M20×1.5 | 8~14 | 10 | 26/26 |
| MG25A-18-V0 | M25×1.5 | 13~18 | 12 | 32/32 |
| MG32A-25-V0 | M32×1.5 | 18~25 | 12.5 | 40/40 |
| MG40A-30-V0 | M40×1.5 | 24~30 | 15 | 50/50 |
| MG50A-40-V0 | M50×1.5 | 33~40 | 15 | 59/59 |
| MG63A-45-V0 | M63×1.5 | 38~45 | 15 | 68/68 |
| G1/4A-08-V0 | G1/4 | 4~8 | 8 | 17/17 |
| G3/8A-10-V0 | G3/8 | 6~10 | 9 | 22/22 |
| G1/2A-12-V0 | G1/2 | 7~12 | 9.5 | 24/24 |
| G1/2A-14-V0 | G1/2 | 8~14 | 10 | 26/26 |
| G3/4A-18-V0 | G3/4 | 13~18 | 12 | 32/32 |
| G1A-25-V0 | G1 | 18~25 | 12.5 | 40/40 |
| G1-1/4A-30-V0 | G1-1/4 | 24~30 | 15 | 50/50 |
| G1-1/2A-40-V0 | G1-1/2 | 33~40 | 15 | 59/59 |
| G2A-45-V0 | G2 | 38~45 | 15 | 68/68 |
| NPT1/4A-08-V0 | NPT1/4 | 4~8 | 8 | 17/17 |
| NPT3/8A-10-V0 | NPT3/8 | 6~10 | 9 | 22/22 |
| NPT1/2A-12-V0 | NPT1/2 | 7~12 | 9.5 | 24/24 |
| NPT1/2A-14-V0 | NPT1/2 | 8~14 | 10 | 26/26 |
| NPT3/4A-18-V0 | NPT3/4 | 13~18 | 12 | 32/32 |
| NPT1A-25-V0 | NPT1 | 18~25 | 12.5 | 40/40 |
| NPT1-1/4A-30-V0 | NPT1-1/4 | 24~30 | 15 | 50/50 |
| NPT1-1/2A-40-V0 | NPT1-1/2 | 33~40 | 15 | 59/59 |
| NPT2A-45-V0 | NPT2 | 38~45 | 15 | 68/68 |

