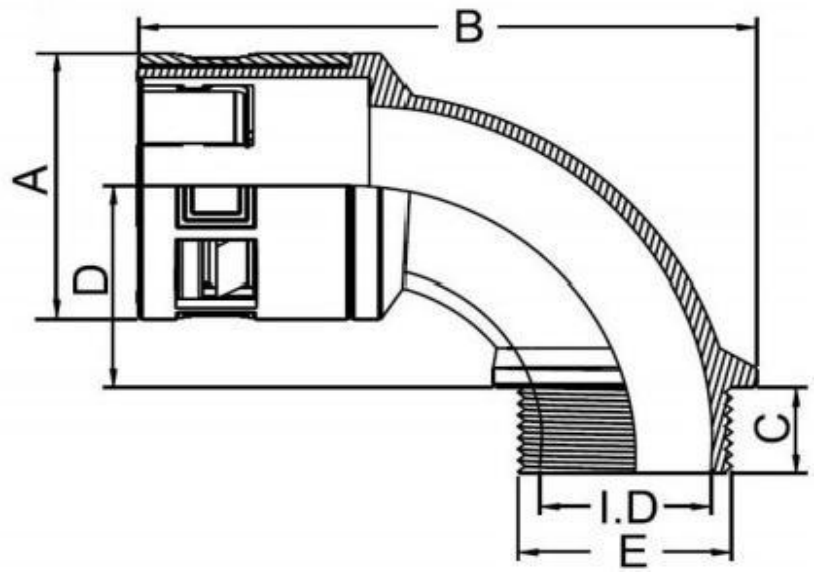


RKHW-弧形快速尼龙波纹管接头

- 产品材料：尼龙
- 防护等级：IP68
- 工作温度：-40°~105°，短时可达120°
- 阻燃等级：UL94V-2 阻燃
- 订购说明：

- 1) 标配螺母，无需请联系客服说明
- 2) 默认黑色，可定制灰白与深灰色
- 3) 产品价格为（人民币：元/套，美元：USD/set）



RKHW arc fast nylon bellows connector

- Product material: nylon
- Protection grade: IP68
- Working temperature: - 40 °~105 °, up to 120 ° in a short time
- Flame retardant grade: UL94V-2 flame retardant
- Ordering Instructions:

- 1) Standard nut, no need to contact customer service for instructions
- 2) Default black, customizable grey and dark grey
- 3) The product price is (RMB: yuan/set, USD: USD/set)

产品尺寸表/Product size

| 蓝江产品型号 | 螺纹规格 | 适配软管 | 产品尺寸 | | | | | |
|--------------------|-------------|--------|--------------|------|-------|------|------|------|
| Product model | Thread size | Hose | Product size | | | | | |
| PN. | Metric | φ mm | I.D. | A | B | C | D | E |
| RKHW-M10-AD10.0 | M10×1.5 | AD10 | 7 | 17.5 | 46 | 8 | 17 | 10 |
| RKHW-M12-AD13.0 | M12×1.5 | AD10 | 9 | 20.5 | 53.3 | 10.2 | 19 | 12 |
| RKHW-M16-AD15.8 | M16×1.5 | AD15.8 | 13 | 23 | 60 | 10.3 | 22.5 | 16 |
| RKHW-M20-AD18.5 | M20×1.5 | AD18.5 | 16.5 | 28 | 70 | 12.2 | 26 | 20 |
| RKHW-M20-AD21.2 | M20×1.5 | AD21.2 | 15.3 | 30 | 72 | 12 | 26.2 | 20 |
| RKHW-M25-AD25.0 | M25×1.5 | AD25 | 21 | 34 | 82 | 12.2 | 28 | 25 |
| RKHW-M25-AD28.5 | M25×1.5 | AD28.5 | 21 | 37 | 81 | 12.3 | 29.9 | 25 |
| RKHW-M32-AD34.5 | M32×1.5 | AD34.5 | 28 | 44 | 95 | 14.9 | 37.2 | 32 |
| RKHW-M40-AD42.5 | M40×1.5 | AD42.5 | 35.2 | 53 | 107.5 | 12.2 | 41.8 | 40 |
| RKHW-M50-AD54.5 | M50×1.5 | AD54.5 | 44.5 | 66.5 | 120 | 14.7 | 46.1 | 50 |
| RKHW-PG7-AD10.0 | PG7 | AD10 | 7.5 | 17.5 | 46 | 8 | 16.5 | 12.3 |
| RKHW-PG9-AD13.0 | PG9 | AD13 | 11 | 20.5 | 56 | 10.2 | 18.8 | 15 |
| RKHW-PG11-AD15.8 | PG11 | AD15.8 | 13.5 | 23 | 60.5 | 10.2 | 22.6 | 18.6 |
| RKHW-PG13.5-AD18.5 | PG13.5 | AD18.5 | 16.5 | 28 | 70 | 12 | 25.7 | 20.4 |
| RKHW-PG16-AD21.2 | PG16 | AD21.2 | 17.5 | 30 | 73.5 | 12 | 26 | 22.5 |
| RKHW-PG21-AD25.0 | PG21 | AD25.0 | 21.5 | 34 | 82 | 12 | 28.5 | 28.3 |
| RKHW-PG21-AD28.5 | PG21 | AD28.5 | 23 | 37 | 82 | 12.2 | 27.8 | 28.3 |
| RKHW-PG29-AD34.5 | PG29 | AD34.5 | 30.5 | 44 | 96.5 | 12 | 36.5 | 37 |
| RKHW-PG36-AD42.5 | PG36 | AD42.5 | 37.5 | 53 | 110 | 12 | 41.7 | 47.3 |
| RKHW-PG48-AD54.5 | PG48 | AD54.5 | 48.5 | 66.5 | 126 | 14.5 | 46 | 59.3 |